

Products / BusPON Mini-series System



BusPON Mini-series is the simplest PON system which employs two wavelengths for bidirectional communication in single thread of optical fiber. BusPON Mini-series can be easily installed to large scale optical network with an Optical Centralized Unit (OCU) using high performance switching fabric and Optical Network Units (ONU).

Features:

- Plug and Play technology
- 50 km range
- from 1 Gbps to 10 Gbps (duplex bandwidth per optical node)
- no intermediate switches/repeaters required
- single fiber Bi-directional WDM
- concurrent Multi-Service Network
- compatible with copper network (Telephone, Cat5/6 and Coaxial)
- standard OCU can be upgraded to have 384 optical ports
- Centralized network management/bandwidth control
- Simple architecture and easy to install
- Ease of upgrading to BusPON C-series equipment

Application:

- Large scale Fiber-to-the-home (FTTH) networks
- School / Campus network (with HD broadcast)
- Multi-service access networks
- Massive WiFi networks
- Commercial Building
- Hospital networks
- Hotel network (internet, HDTV, video conference etc.)
- Internal Cloud access points
- data centers

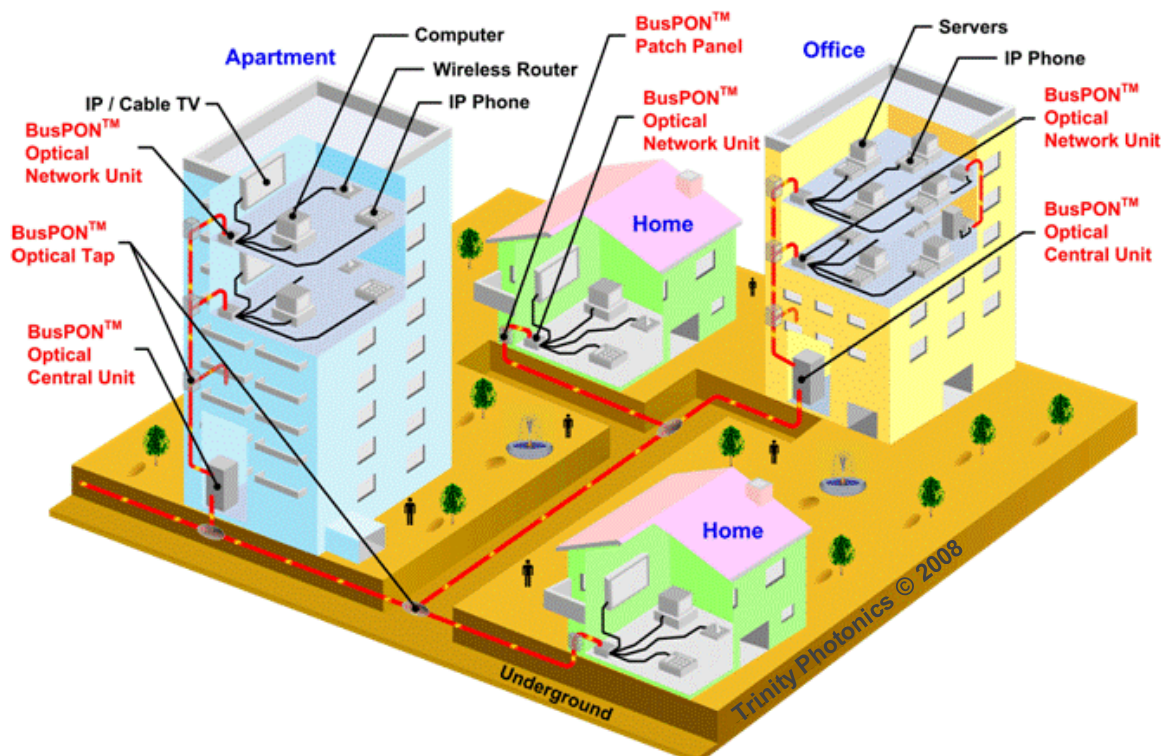


BusPON Mini-series Optical Central Unit



BusPON Mini-series Optical Network Unit

Access Solutions for FTTC, FTTB and FTTH



Copyright © Trinity Photonics 2013



Trinity Photonics Manufacturing Co. Ltd.
Unit 209C, 2/F Enterprise Building
Hong Kong Science Park
Shatin
Hong Kong

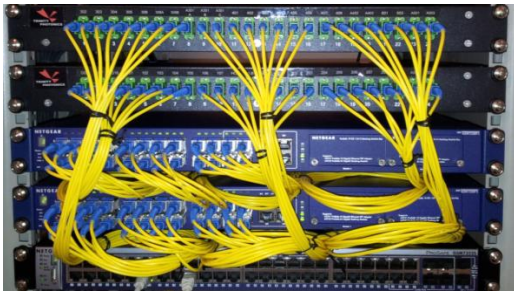
Web: www.tphoton.com
Email: info@tphoton.com

Phone: (852) 51698755
Fax: (852) 51698954

Your Partner for the Next Generation Network



1. BusPON Mini-series Optical Central Unit (OCU)



Network Standards:

- IEEE 802.3ab 1000Base-T
- IEEE 802.3z 1000Base-SX/LX
- IEEE 802.3u 1000Base-FX
- IEEE 802.3ae 10Gb/s Ethernet

Regulation Compliance:

- FCC Class A, CE-mark Class A, RoHS
- Laser Eye Safety EN60825, IEC6082

Specification:

- High performance Platform provides communication for internet and intranet (i.e. LAN, WiFi and servers etc.)
 - Basic configuration: 24 Optical Ports (for remote nodes) which can be scalable to 384 optical ports
 - Bidirectional Optical Transceivers with wavelength:
Tx: 1550nm , Rx: 1300nm
 - Tx Optical Power: > 0.6dBm; Rx Sensitivity: <-25 dBm
 - Interface: SC/PC single mode (optical) and RJ45 (electrical)
 - Max serviceable distance: 50km single mode fiber
 - Internal Switching Capacity: 192 Gbps (L3)
 - Data Rate: Full Duplex 1 Gbps (10/100/1000M Auto) or 10 Gbps
 - Ready for 10 Gbps links (for WAN or PON)
 - Operation Condition: 0 to 50°C and 10 to 90% RH
 - Dimension: 2U for 24 node, 3U for 48 nodes
For L3 switching fabric: 442mm x 374mm x 44mm
- * Multi-service modules/linecards such as SDH, STM, HD/SD video and xDSL are available upon request. project@tphoton.com

2. BusPON Mini-series Optical Network Unit (ONU)

Specification:

- Bi-directional Optical Transceiver with Wavelength:
Tx: 1300nm, Rx: 1550nm
- Optical parameters:
Tx Optical Power: > 0.6dBm
Rx Sensitivity: <-25 dBm
- Interface: SC/PC single mode (optical) and RJ45 (electrical)
- Max serviceable distance: 50km single mode fiber
- Data Rate: 1Gbps with 10/100/1000M Ethernet Auto Neg.
- Two options for Gigabit ONU:
(i) ONU-Mini-1 (1 UTP port, 1 SFP port)
(ii) ONU-Mini-4 (4 UTP ports, 2 SFP ports)
- Operation Condition: 0 to 50°C and 10 to 90% RH
- Dimension:
25mm x 70mm x 95mm (ONU-Mini-1)
30mm x 110mm x 140mm (ONU-Mini-4)
- Power: DC5V/2A



BusPON Mini-series Optical Network Unit

Network Standards:

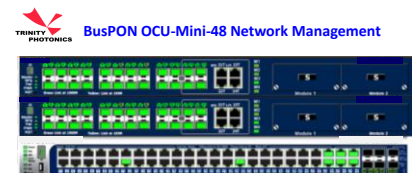
- IEEE 802.3ab 1000Base-T
- IEEE 802.3z 1000Base-SX/LX
- IEEE 802.3u 1000Base-FX

Regulation Compliance:

- FCC Class A, CE-mark Class A, RoHS
- Laser Eye Safety EN60825, IEC6082

3. BusPON Mini-series Network Management System

Trinity Photonics provides web-based Network Management System for the BusPON Mini-series system.



Selection Guide for BusPON Mini-series System:

Optical Central Unit (OCU)	OCU-Mini-XX-YY	XX – no. of port/node From 24 to 384 YY – coverage range (up to 120 km) e.g. 03 = 3 km; 120 = 120 km
Optical Network Unit (ONU)	ONU-Mini-X-YY	X – no. of UTP port 1 = 10/100/1000M UTP port x 1 4 = 10/100/1000M UTP port x 4 YY – coverage range (up to 120 km) e.g. 03 = 3km; 120 = 120 km